



# **ERCLC**

# **Team 6 Presentation**

By Elisha Duong-Paul, Kaylee Burr, Samuel Huecker,  
Jesse Morris, and Jonathan Castellanos

# Table of Contents

- **STANISLAUS LANDSCAPE PROJECT**

History of project and location

---

- **FIRE BREAKS AND SHADED FUEL BREAKS**

What they are, and how they are used in the SLP

---

- **MAINTENANCE METHODS**

Discussing the pros and cons of different methods

---

- **MAINTENANCE FLOW CHART**

A flow chart used for finding the right maintenance methods

---

- **Applying the Chart**

Our final thoughts





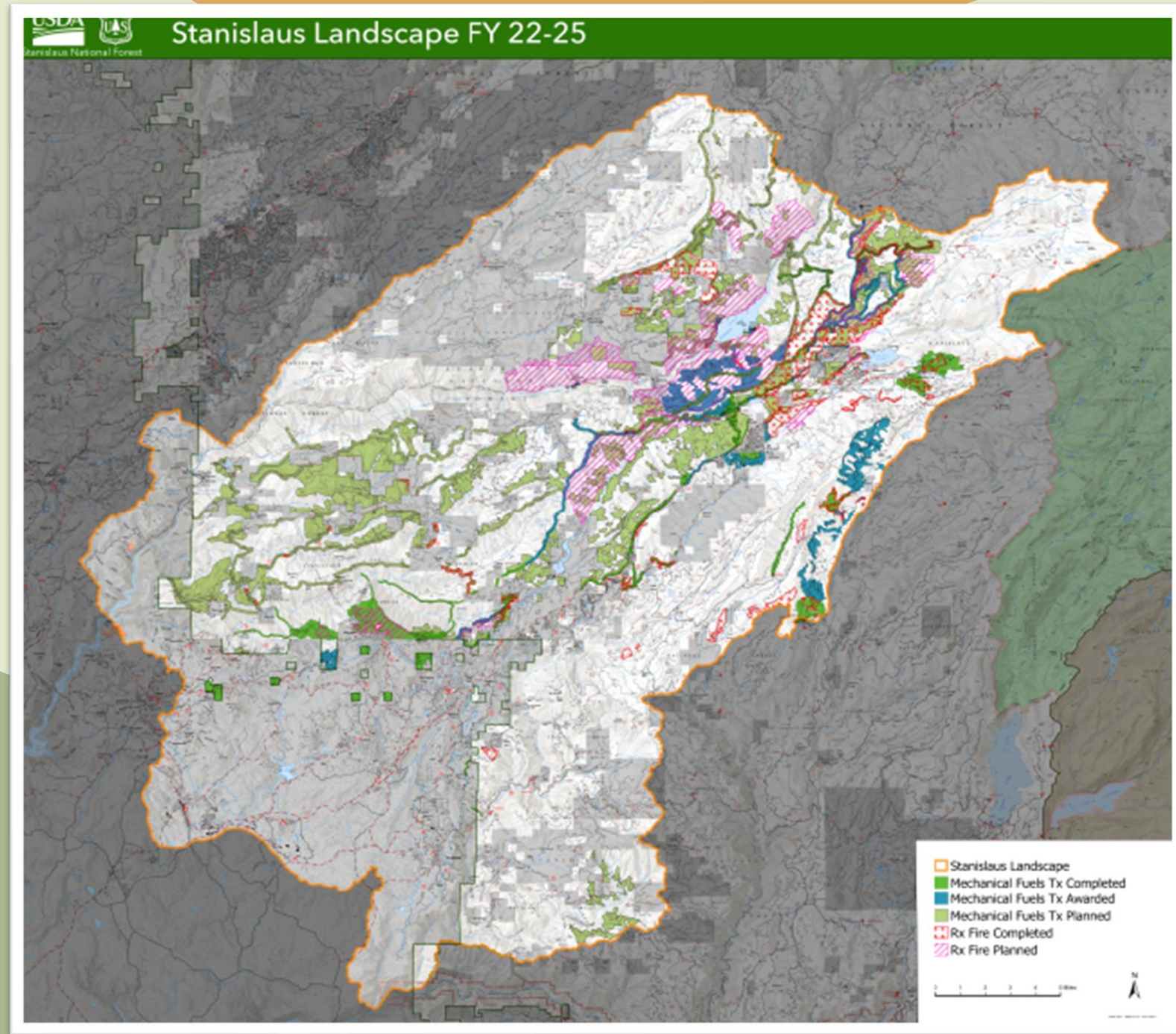
# The Stanislaus Landscape Project

2021 Wildfire crisis

1 of 10 Landscaped funded for fuel reduction

Chosen because of fire-corridor and potential for catastrophic fires.

300,000 getting treated with fuel breaks.



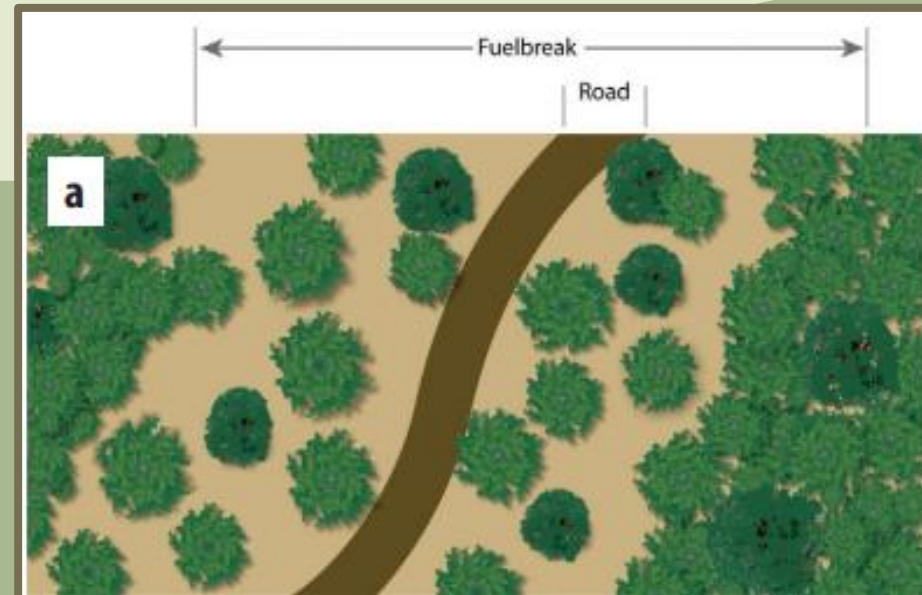


# Form and Function of Fuel Breaks in the SLP

- Removal of ground fuel to slow the spread of potential fire
- Thins trees to create space between the crowns
- Fuel breaks require maintenance to control vegetation regrowth in the years following their initial installation



**Figure 13a.** A perimeter dirt road serves as a fire-break. The area immediately to the left is a fuelbreak where young pine have been thinned and flammable shrubs have been mowed.





# Importance of Maintaining Fuel Breaks

- If fuel breaks are unmaintained for multiple years they will regrow
- Continuous maintenance keeps the area resistant to fire
- Fuel breaks must be maintained across different land ownerships to be effective



# Methods of Maintenance



## Mastication

### Pros:

- Soil benefits
- Wildlife use
- Large scale

### Cons:

- Leaves fuel on ground
- Weather conditions
- Can't access steep or rocky areas
- High cost
- Can damage soil



# Mastication Treatment Area





# Methods of Maintenance



## Hand Piling

### Pros:

- Precise work
- Fast work
- Can access any terrain

### Cons:

- High cost of labor
- Labor intensive
- Small scale
- Piles must be burned



# Hand Piling Treatment Area





# Methods of Maintenance



## Machine Piling

### Pros:

- Large scale

### Cons:

- Equipment cost
- Can't access steep terrain
- Will hurt sensitive soil
- Piles must be burned



# Machine Piling Treatment Area

\*After Pile Burning





# Methods of Maintenance



## Broadcast Burns

### Pros:

- Very cheap
- Clears large areas quickly
- Provides nutrients for soil

### Cons:

- Very risky
- Can't use around populated areas
- Needs a prescription
- Can only be done in certain weather conditions



# Broadcast Burn Treatment Area





# Methods of Maintenance



## Herbicides

### Pros:

- Lasts a very long time
- Requires little follow up
- Cheap

### Cons:

- Public perception\*
- Needs prior treatment

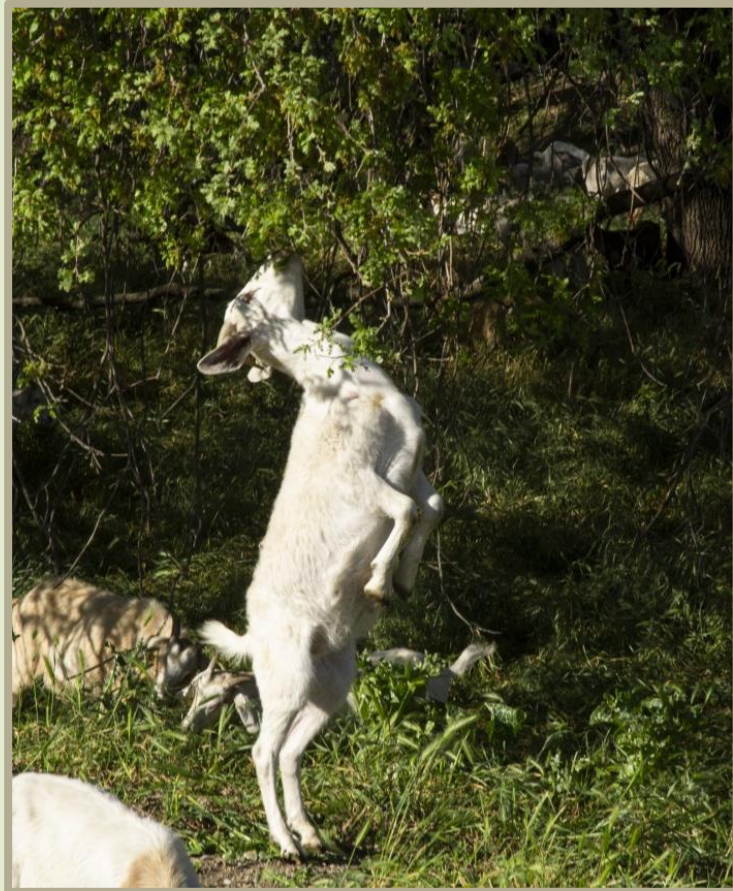


# Herbicide Treatment Area





# Methods of Maintenance



## Grazing

### Pros:

- Good for ecosystem
- Feeding livestock

### Cons:

- Conditions can be particular
- Work required to transport and manage
- Brush needs to be low

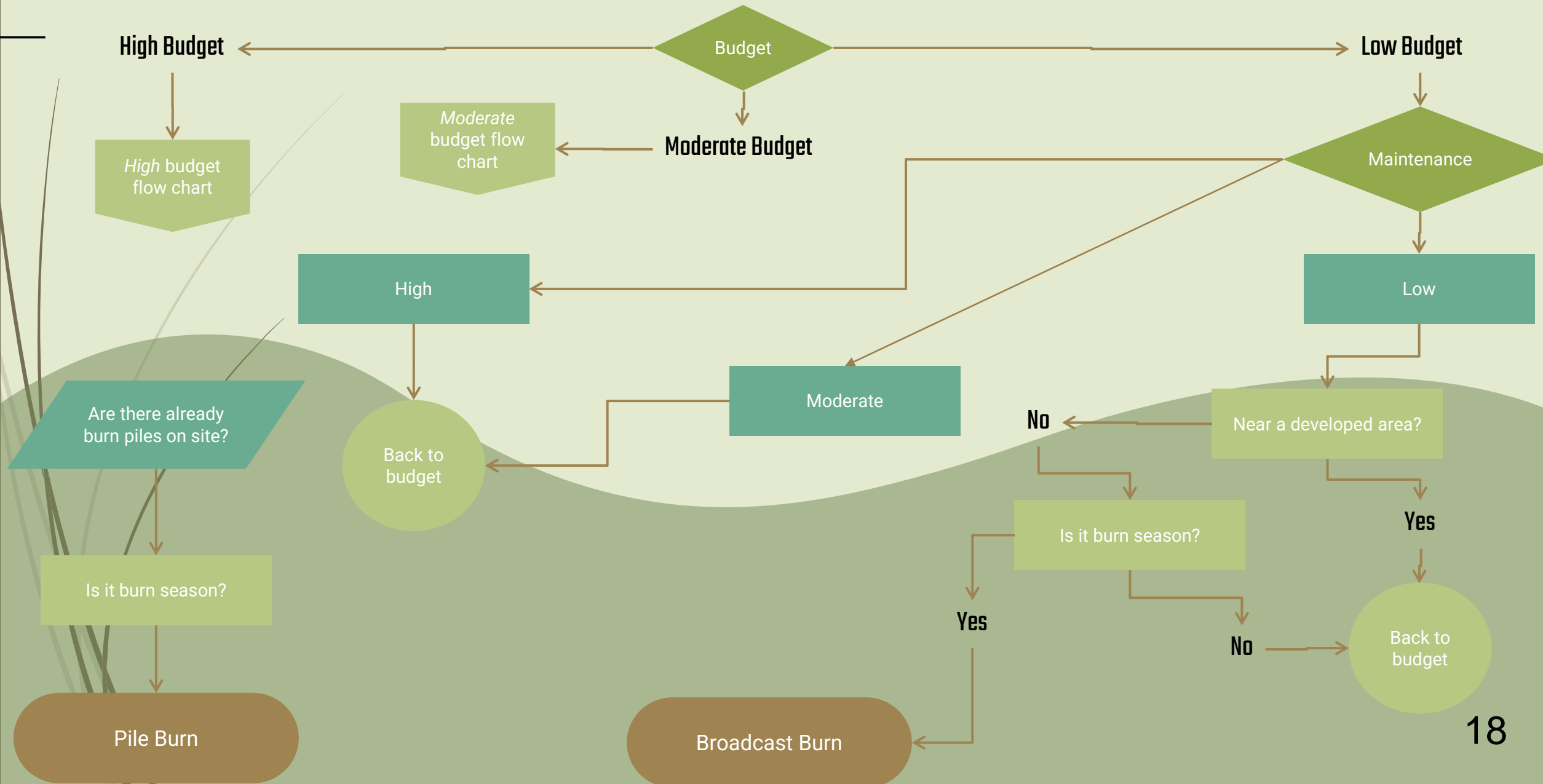


# Grazing Treatment Area



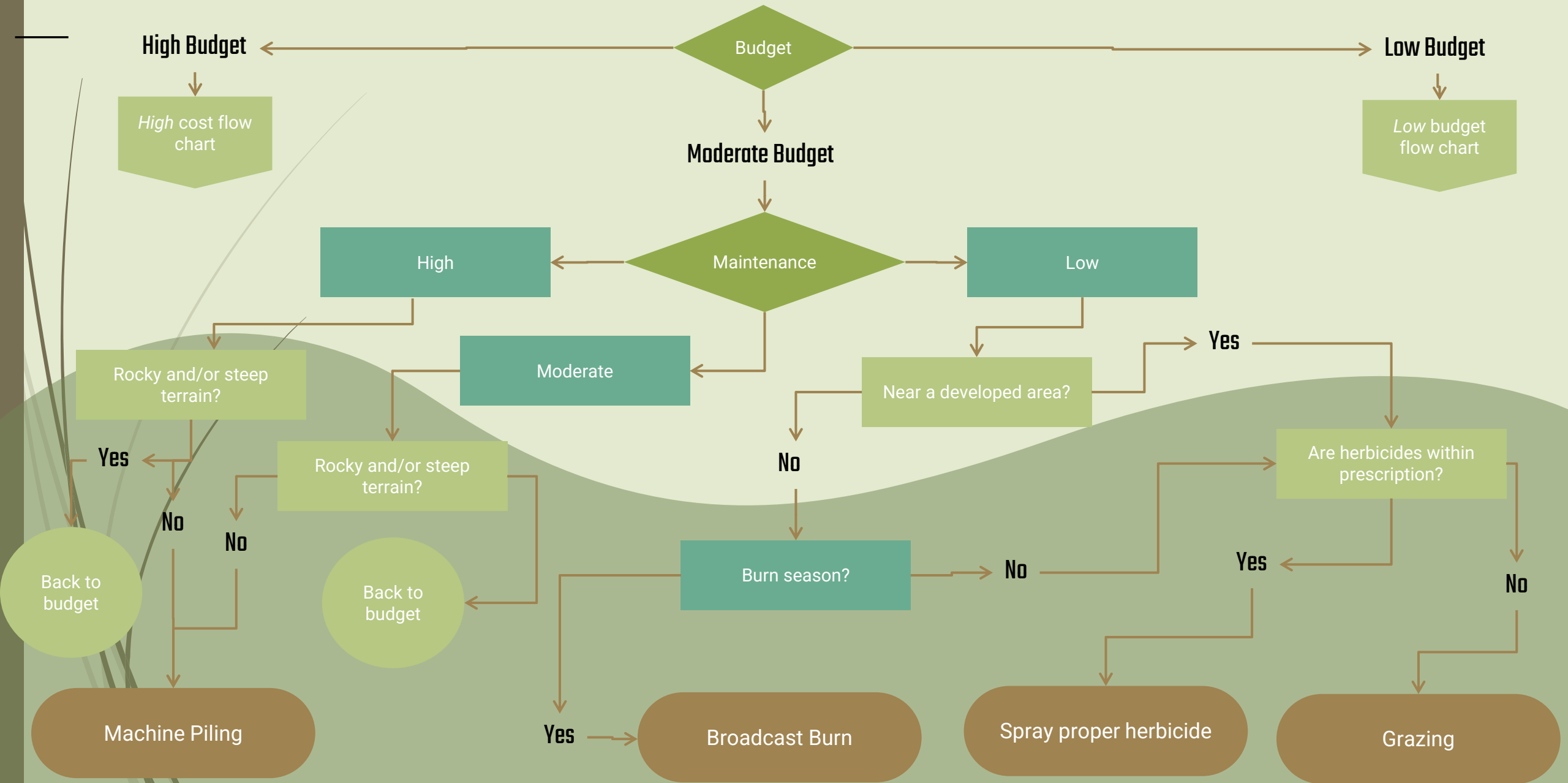


# Maintenance Method Flow Chart (Low Budget)



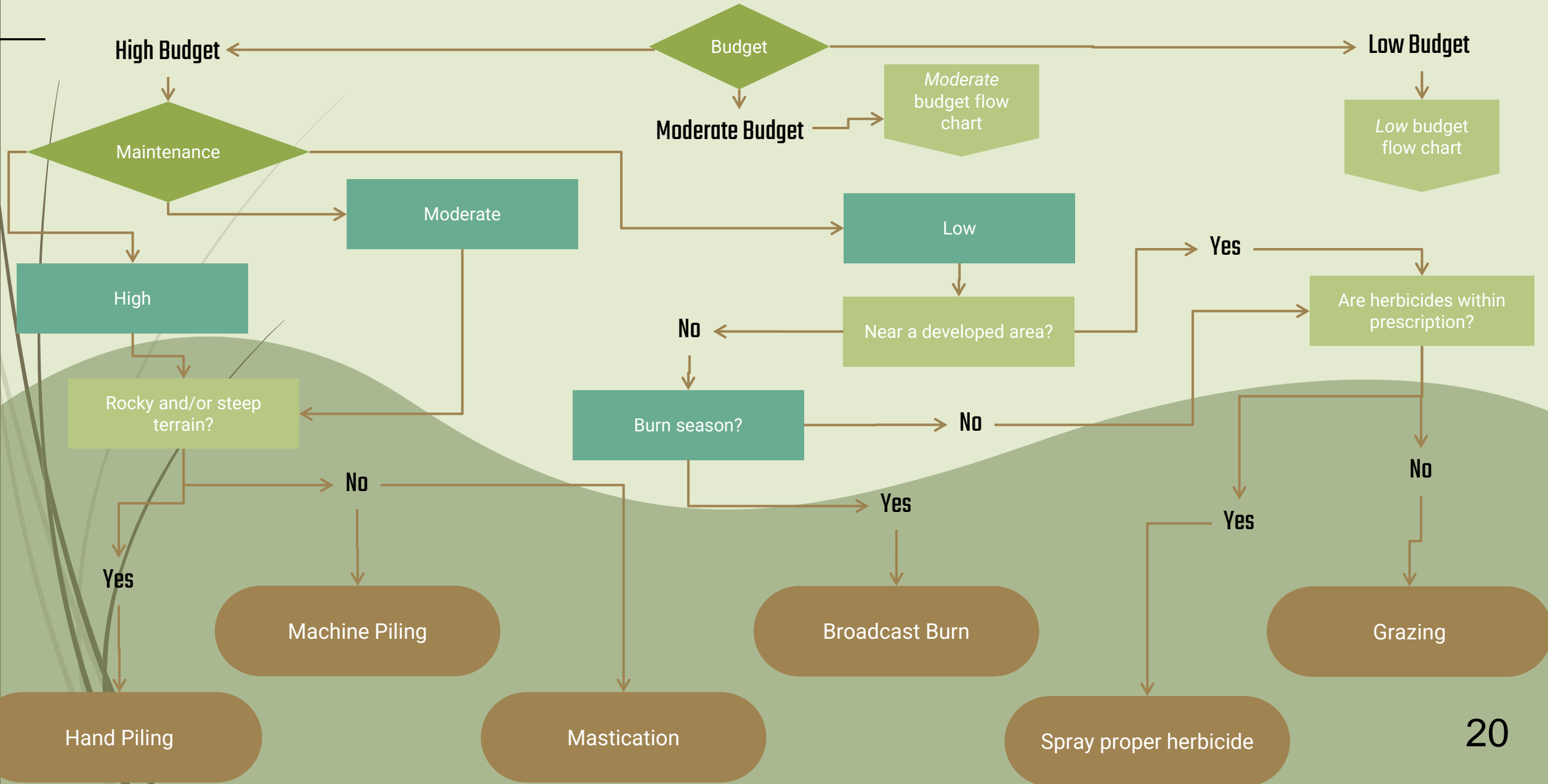


# Maintenance Method Flow Chart (Moderate budget)





# Maintenance Method Flow Chart (High Budget)





# Treating the Plot

- The plot below is a low-moderate maintenance area







*Any Questions?*





THANK YOU FOR  
LISTENING

-TEAM 6